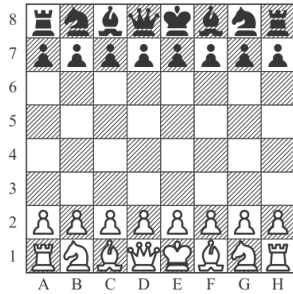


MOVIMIENTOS DE LAS PIEZAS DEL AJEDREZ

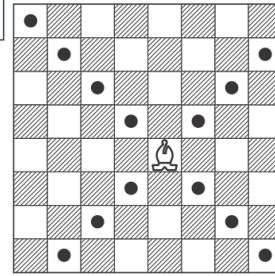
COLOCACION DE PIEZAS



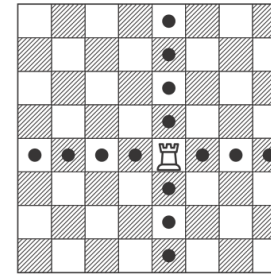
EL PEON



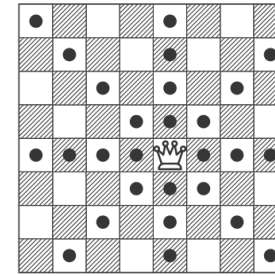
EL ALFIL



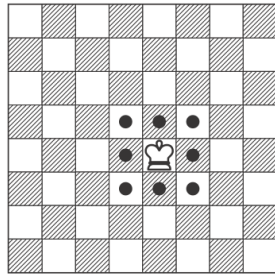
LA TORRE



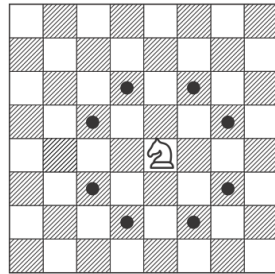
LA DAMA



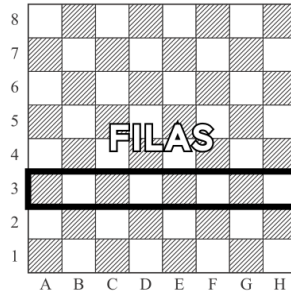
EL REY



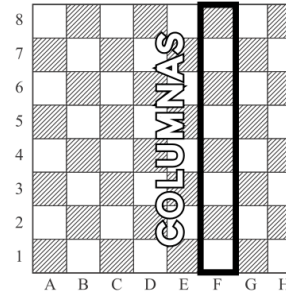
EL CABALLO



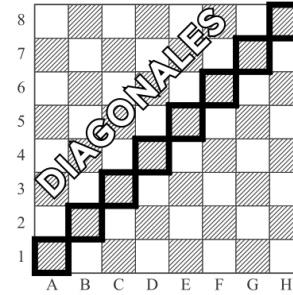
LAS FILAS



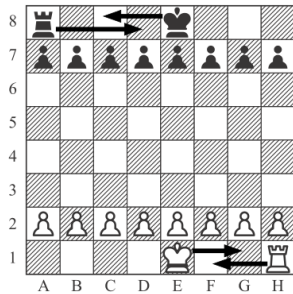
LAS COLUMNAS



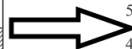
LAS DIAGONALES



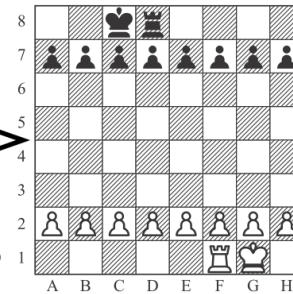
EL ENROQUE



LARGO



CORTO



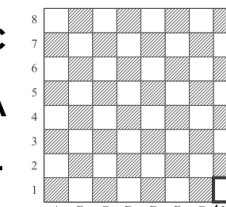
NOMBRE DE PIEZAS



PEON	1 PUNTO	NO SE MARCA
CABALLO	3 PUNTOS	C
ALFIL	3 PUNTOS	A
TORRE	5 PUNTOS	T
DAMA	9 ó 10 PUNTOS	D
REY	INFINITO	R

VALOR

LETRA



CUADRO BLANCO A LA DERECHA
8X8
64 CASILLAS

Nombre: _____